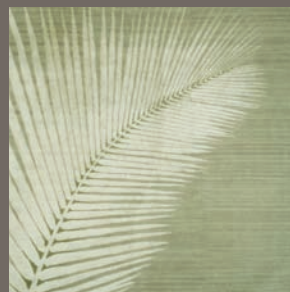




ANTOINE PROULX



GALERIE ANTOINE PROULX

furniture • rugs • lighting • art • pottery

WELCOME

Antoine Proulx was founded in 1992 by Marc Desplaines who launched the U. S. corporation of renowned Japanese fashion designer Yohji Yamamoto in New York City. The Antoine Proulx collection of handcrafted furniture was designed by Marc out of his frustration at not being able to find what he was looking for in the market. As fate would have it, his brother Richard Desplaines was already established as a master furniture maker with nearly 20 years experience producing one-of-a-kind pieces for designers and architects. The two brothers cemented a design/build relationship which would land their furniture in prestigious magazines such as *Interior Design*, *Progressive Architecture*, *I. D.*, and the *New York Times*. The name, Antoine



Proulx, is derived from the brothers' paternal grandmother, Antoinette Proulx, whose father was a builder of fine homes in New England at the turn of the twentieth century.

Since 1992, Desplaines has grown the Antoine Proulx collection from its initial sixteen pieces to two hundred thirty distinct items. With increased recognition in the high-end residential market, some of Marc's furniture for Antoine Proulx was chosen for sets in two films, *How Do You Know* (Columbia Pictures, 2011) and *Autumn In New York* (MGM Pictures, 2000). Television credits include *While You Were Out* (TLC, 2003) and *Queer Eye for the Straight Guy* (Bravo, 2007). His furniture is sought after and owned by some of the country's best known sports figures (Mike Piazza), entertainers (Ron Howard), and financial analysts (Suze Orman). His furniture for Antoine Proulx may also be seen in luxury resorts worldwide including The Ritz Carlton, The Four Seasons, W Hotels, and Sheraton. The Antoine Proulx collection is now represented in ten showrooms.

In 2013, Marc opened his own gallery in downtown Scottsdale, Arizona to showcase not only his designs but also the work of leading artists from around the country and abroad. See the entire collection at **antoineproulx.com**.

Galerie Antoine Proulx
4175 N. Goldwater Blvd., #105
Scottsdale, AZ 85251
602-952-1580

A. Rudin Los Angeles
8687 Melrose Avenue, #G-172
West Hollywood, CA 90069
310-659-2388

A. Rudin San Francisco
101 Henry Adams Street, #303
San Francisco, CA 94103
415-431-5021

Bloom Furniture Studio
495 Railway Street
Vancouver, BC V6A 1A7
604-215-0051

DeLuca Gallery
432 Commercial Street
Provincetown, MA 02657
917-855-4267

Exhibiting Artists



Mark Albrecht, Furniture Designer

Mark Albrecht Studio is a furniture design studio and workshop based in Long Island City, NY since 1998. Albrecht's signature approach is to engage as few elements as possible to yield a design that is timeless, functional, and resilient. He is committed to a vibrant workshop model that utilizes modern tools and manufacturing techniques, while maintaining a tradition of time-honored craftsmanship required for production of quality handmade furniture. Albrecht has been prominently highlighted in numerous publications including Architectural Digest, Elle Decor, GQ, and the New York Times. His work furnishes The Modern, a restaurant at the MoMA in New York City as well as several of Tom Colicchio's Craft restaurants.



Chris Baisa, Delinear Rugs

Delinear was founded in 1993 by Chris Baisa. It's aesthetic principles are based in modern design. The Delinear rug collection was realized through Chris' extensive experience in furniture, product and interior design. Having worked with several manufacturers developing furniture products, a natural progression toward a more hand-crafted textile product occurred. The goal of Delinear is to create uniquely beautiful products to last a lifetime. Personal attention is paid to every rug and every client from the specification process to the delivery. Delinear proudly supports Goodweave, a humanitarian non-profit organization that is dedicated to ending child labor in the rug industry. A percentage of every rug sale goes to Goodweave.



Jeremy Cole, Lighting

Jeremy Cole is an award winning, world renowned artisan who has been pushing the boundaries of ceramics since 2005. His simple yet opulent style has reached every level and has resulted in his work being featured in magazines across the globe, and most notably, incorporated into a number of museum collections around the world. All of Jeremy's works are produced in his studio by hand and encapsulate his ideology for elegance, beauty and craftsmanship. It is Jeremy's dictum to constantly experiment with and challenge the mediums of ceramics and light by exploring the relationship between flora and art.



Gary Hutton, Furniture & Interiors

As a young child a chance sighting of Kim Novak opened his small town eyes to the larger world of beauty and glamour, forever altering his perspective. His Art studies at UC Davis were a life-changing event and a lust for information of materiality was instilled in him that drives his work to this day. Upon graduation from California College of the Arts, his first project, a restaurant on Union Square in San Francisco, was published in 1979 and quickly attracted an elite list of the San Francisco glitterati. Unveiled in 1986, the Gary Hutton Furniture line pushed boundaries. Gary actively lectures at museums and showrooms across the country and continues his support of arts and design education and other social causes.



Luis Salazar, Artist & Architect

In 1971, Luis A. Salazar joined the Peace Corps upon receipt of his Bachelor of Architecture degree from Arizona State University. He served as Area Architect in Eastern Province, Sierra Leone, West Africa. Such fundamental changes in geography had a lasting effect on his career - always aware of the environment, sensitive to people's needs, and integrating materials with the local environment whenever possible. His experience serves as a reminder that there is more than one interpretation to a set of circumstances, and numerous approaches in solving any given problem. Mr. Salazar is certified by the National Council of Architectural Registration Boards for the states of Arizona and California.

Dennis Miller Associates
200 Lexington Avenue, #1210
New York, NY 10016
212-684-0070

J. Batchelor Showroom
1855 Griffin Road, #A-160
Dania Beach, FL 33004
954-926-1881

Montage, Inc.
75 Arlington Street
Boston, MA 02116
617-451-9400

Town, LLC
601 South Broadway, Suite A
Denver, CO 80209
303-282-8696

Trammell-Gagné
5701 6th Avenue South, #105
Seattle, WA 98108
206-762-1511



ANTOINE PROULX

O Series

This collection responds to market demands where “softer” forms and finishes balance the often angular constraints of contemporary projects. More and more, clients desire an overall sense of softness and sumptuousness in their private quarters after facing what can be a cold, hard world outside.

Pieces in the O Series were inspired by a divergent array of subjects ranging from the house designed by Eileen Gray in Cap Martin to the paintings of Francis Bacon: Study for a Nude (1951) and Study for Crouching Nude (1952).





ANTOINE PROULX

French Series

Inspiration for this collection that launched Antoine Proulx stems from the works of architect, Pierre Chareau, most notably his *Maison de Verre* in Paris. It celebrates the seamless joinery of wood and steel while masking the techniques used to keep the forms clean, suspended, and cantilevered.

The French Series continues the use of traditional building methods, while constantly seeking improvements to the old ways as well as new ways to meet the needs of a modern society. The external hardware is made by hand in our own workshop.





Czech Series

Inspired by the Czech Cubist movement which took place in Prague roughly between 1910 and 1920, Antoine Proulx's Czech Series is a departure from the company's initial collection in that none of these pieces incorporate cold-rolled steel into their designs. Rather, their strength is derived from the energy created by the series' signature angles and the space and motion they create.

The simple surfaces and clean joints belie the difficult manufacturing process employed: the angled shapes require precision-cut compound angles. The smooth facades, which rely heavily on geometry, hide all the joinery and internal supports.

ANTOINE PROULX

Belgium Series

Inspiration for the Belgium Series came from René Magritte's 1938 oil on canvas entitled, *Les Marches de L'été*, in which the sky is depicted as man-made blocks obliquely positioned.

It exhibits a sense of motion contrasted with a sense of seeming imbalance. Some pieces give the appearance that the furniture's components twist, pivot, or turn, when actually they are fixed into their twisted positions with the exception of the CT-35 Coffee Table. The Belgium Series provides a conversation piece to any room setting.





ANTOINE PROULX

Dutch Series

Inspiration for the Dutch Series came from the room settings of many of the Dutch Masters' painters including Johannes Vermeer. Of particular importance is the juxtaposition of simple shapes with ornate detail overtones, while maintaining a decidedly contemporary note.



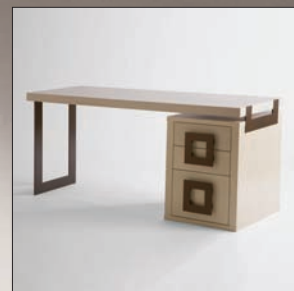



ANTOINE PROULX

Executive Series

Antoine Proulx is widely recognized for its functional and sophisticated office furniture for both high-end residences and offices of the world's leaders in commerce. The refined elegance and huge selection of Antoine Proulx's office furniture is unparalleled in the residential market.

It fits perfectly in any contemporary corporate setting while meeting the growing demand for home office furniture. This collection supplies the home owner with options to create a niche anywhere in the home because the components look and feel like residential furniture. Certain desks incorporate a unique wire management channel which allows for easy manipulation and tracing of wires and power strips within the body of the desk top. Pieces are made by hand so dimensions and configurations can be customized to fit your space as though they were "built in."



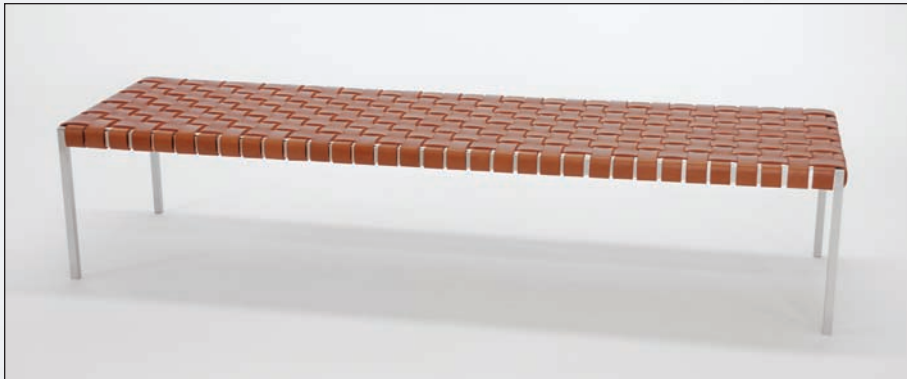


GARY HUTTON

The process includes conceptual riffing, drafting, discussion of materials, and prototyping, before a new piece can be introduced into the Gary Hutton Furniture line.

The metal furniture is divided into two categories: cast and fabricated. Cast bronze tables are made using the centuries old lost wax process while fabricated pieces are precision made with solid bronze or stainless steel plate.





Mark Albrecht Studio



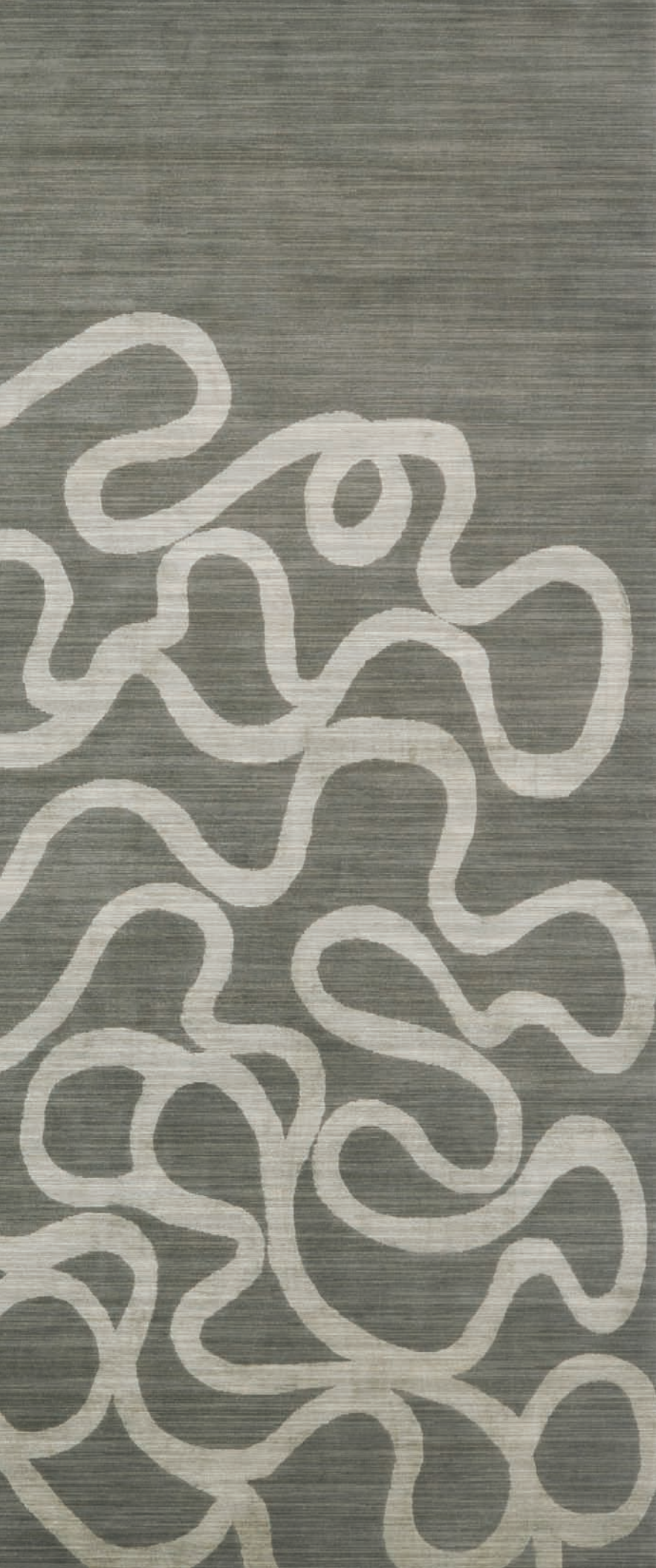


Delinear's collection of superior quality hand-knotted rugs has been meticulously conceived and developed with reverence to the painstaking art of rug weaving. They have carefully blended the use of provocative new materials, patterns and techniques to create exciting modern rugs with luminous and soulful qualities.



HAND-KNOTTED RUGS





wool banana silk bamboo cactus



HAND-KNOTTED RUGS



linen jute soybean nettle hemp





As well as designing and producing his own works, they have been incorporated into apartments, houses, and yachts for an international list of private clients. Jeremy also undertakes commercial commissions for hotels, restaurants, and offices.



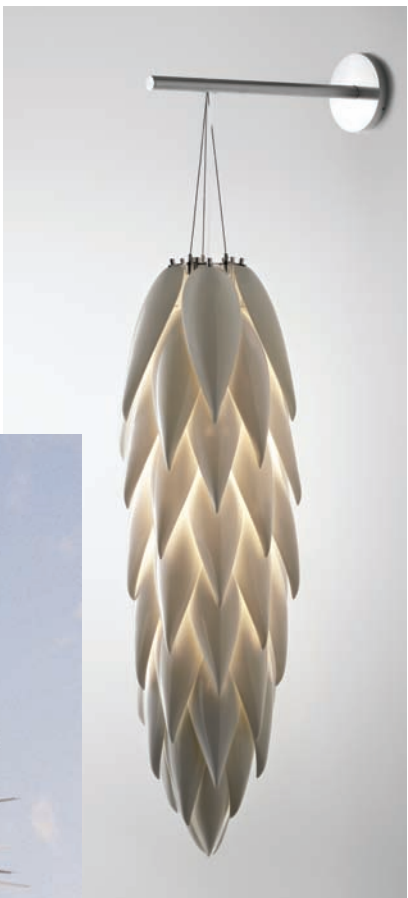
All of Jeremy's works are produced in his studio by hand and encapsulate his ideology for elegance, beauty and craftsmanship.

Past projects include Harry Winston (globally), Bulgari and Air New Zealand.



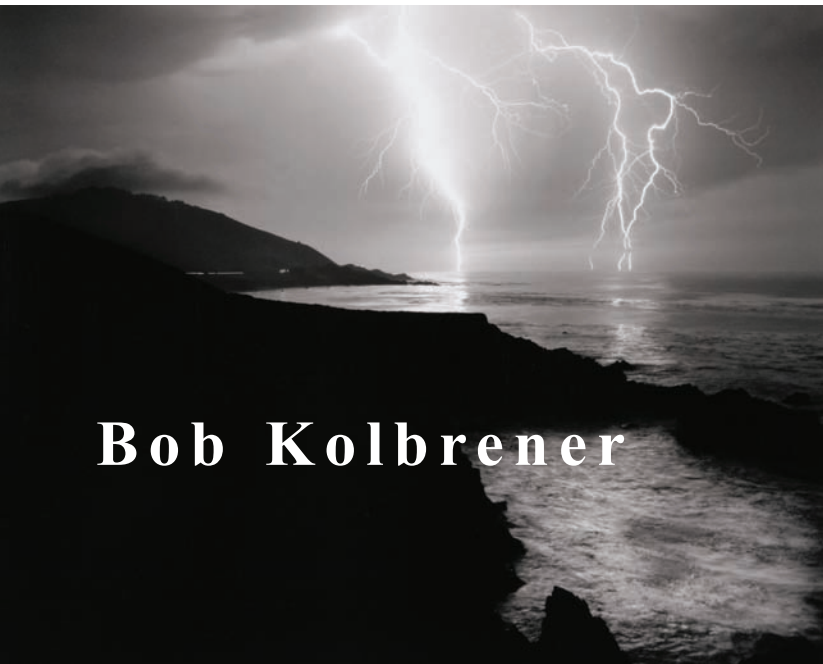
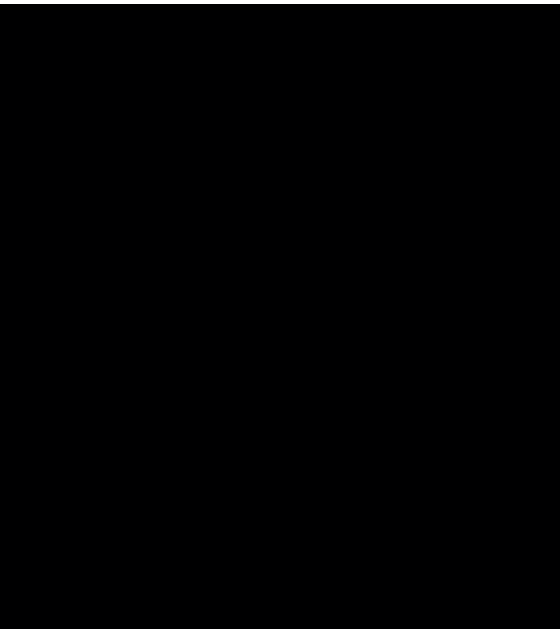
JeremyCole

Lighting





Bob is best known for his work in the Great American West and California Coastline. Included amongst his iconic images of Yosemite National Park are a number of photographs taken in Arizona, Wyoming, Oregon, Utah, Nevada and Colorado. All photographs are created in the tradition of “straight” photography. There is no use of computers or multiple imagery. There is no print or negative enhancement such as bleaching or intensification.



Bob Kolbrener



In the city that never sleeps, in a little studio on the Lower East Side, Artist Scooter Laforge creates his pop culture and cartoon world, only to be described as masterpieces. Scooter began his love affair with art at a very young age, growing up in Las Cruces, New Mexico. He received a painting degree at the University of Arizona, and then moved to San Francisco where he found his voice as an artist. After finishing his studies at Cooper Union in New York, Scooter made a promise to himself: to use his work as a confessional to the life that he lives. Scooter's work can be characterized as Pop Art partnered with abstract expressionism and Dutch classicism.



Scooter Laforge



Paula Desplaines set out to design furniture for her pets with a dual function in mind. Having lived her life in small spaces in big cities, she tired of having an ugly pet bed taking up valuable human living space. Doggiedasherie was created so that pet lovers can incorporate their pets' necessities as well as their own aesthetic needs into their modern living environments. Five of Doggiedasherie's handcrafted pet beds also double as end tables.



DOGGIEDASHERIE



Hidden in the heart of Marrakesh are garden oases to which we pay tribute with our king-size garden pots. They especially show the talent and expertise of the potters. These outstanding and masterful pieces are true sculptures and can require several months to complete. This craft is appreciated amongst our most demanding clients.



Moroccan Luxury



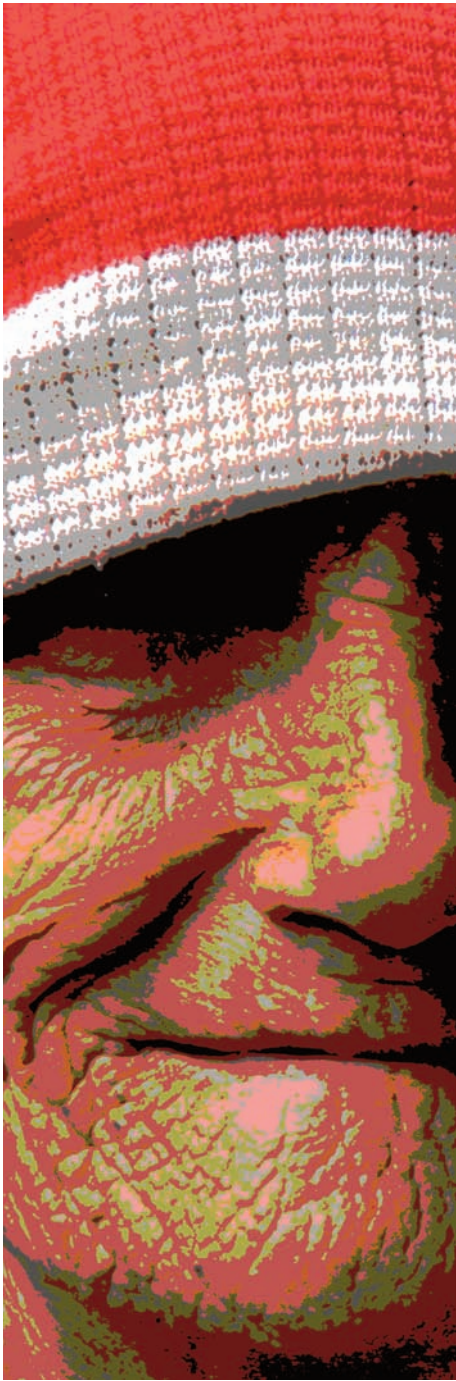
Luis began developing his interest in photography by studying with well know photographer, Jack Stuler, while attending the College of Architecture at Arizona State University.

Upon receiving his architecture degree, Luis journeyed to Sierra Leone, Africa, where he spent two years in the Peace Corps. Intrigued with the spontaneity of everyday life in Africa, his camera became a constant companion.

His images have been said to seduce the eye, drawing viewers in closer to interpret the power of the story they are working to portray. His images are honest, spiritual, and many times express a surreal quality.

LUIS A. SALAZAR





LUIS A. SALAZAR
ARCHITECT

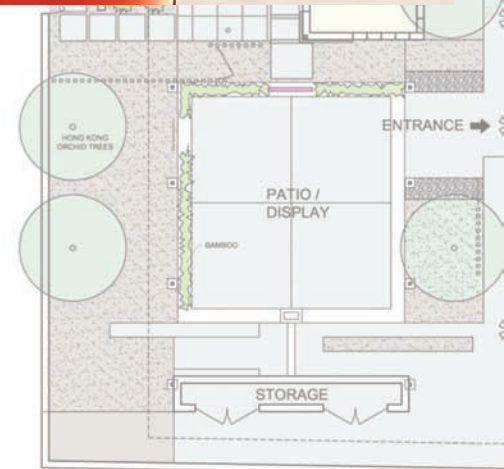
Antoine Proulx has a unique relationship with Phoenix architect, Luis Salazar. Together we can provide you with a custom redesign of your space or an entirely new house from the ground up. All our projects include: program and concept development; working drawings, site plans,



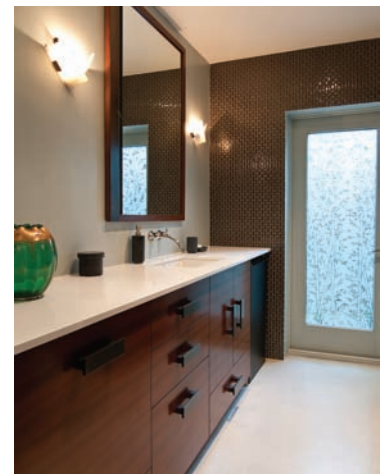
and elevations; specification of products and finishes; cost estimating; contract document preparation; permit expediting; construction inspection and final installation. Shown here is a house remodel in the Arcadia area of Phoenix, Arizona.



A major part of the program included shading the back yard from the west sun and making it useful year round. A focal wall which contains storage in the back also shows off a water feature and fire pit. A home office/studio was also added to the patio under the new shade structure.

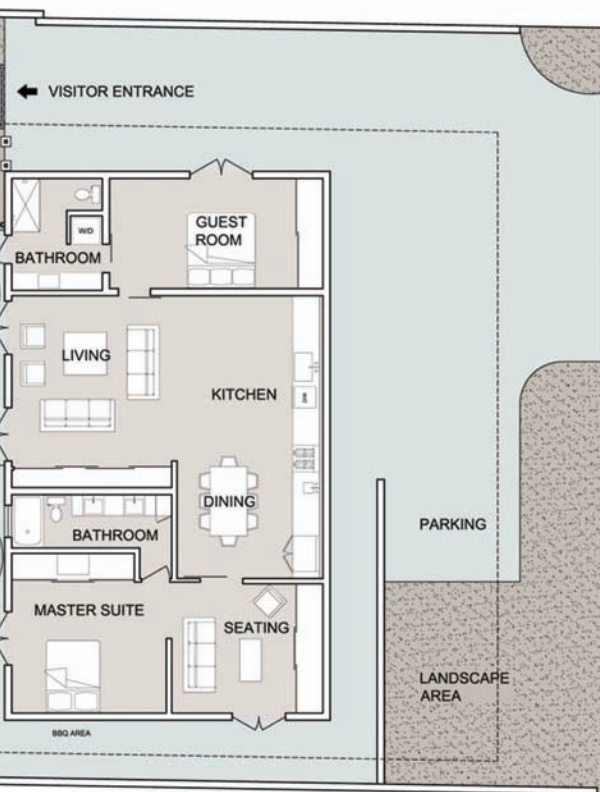


1 HOME AND YARD PLAN 0 5 10 20 FT. N

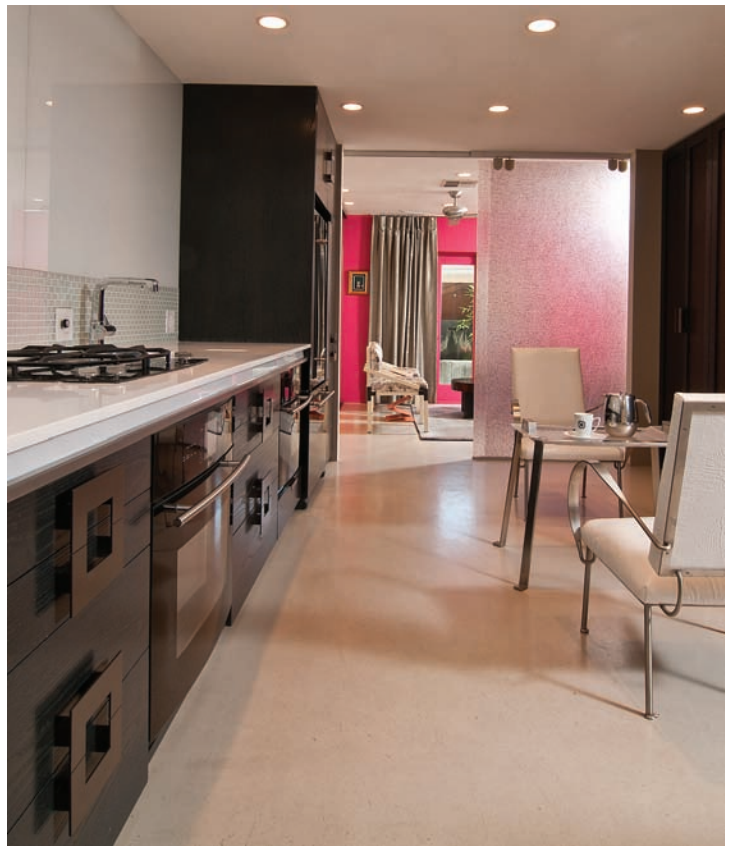


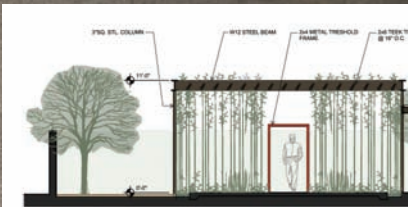
LUIS A. SALAZAR
ARCHITECT

The program for this project also included removing all remnants of the 1950's from plumbing and wiring to aesthetics. Several walls were removed to create a more open living space. The new kitchen was moved to a different location within the house and a new bathroom was created. An exiting bathroom was completely remodeled.



The custom kitchen cabinets and bathroom vanities were fabricated in Massachusetts by R & P Woodworking, the manufacturer of all Antoine Proulx furniture. Most of the furniture in the house was selected from the Antoine Proulx and Gary Hutton collections. Much of the artwork is from Scooter Laforge and Luis Salazar.



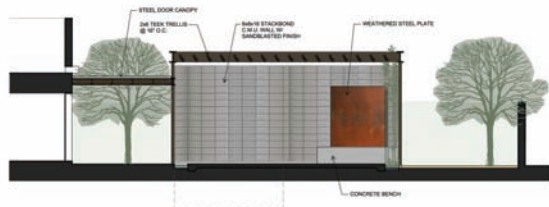
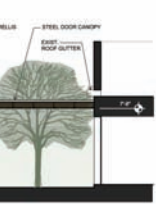


1 SECTION-ELEVATION
SCALE: 1/4" = 1'-0"



3 SECTION-ELEVATION
SCALE: 1/4" = 1'-0"

LUIS A. SALAZAR
ARCHITECT



2 SECTION-ELEVATION
SCALE: 1/8" = 1'-0"





The guest bedroom, top (left and right), is furnished with a customized Antoine Proulx bed and a desk and end tables from the collection. The painting, left, is by Matthew Benedict.

For the master bedroom, above (left and right) a suite was created by eliminating an unwanted bedroom. The sofa is by Gary Hutton and the bed, bench, chairs, and coffee table are Antoine Proulx. The collage above the sofa is by Scooter Laforge.



Antoine Proulx and its manufacturer, R & P Woodworking, Inc., strive to be eco-conscious in all parts of our operation. Here is what we currently do and know about our manufacturing and daily business operations which are documented to be ecologically sound.

- Antoine Proulx furniture is made in the USA.
- The exterior cabinetry is fabricated using veneers. Veneers are more ecologically sound than solid woods because veneers are 1/42" thick, therefore more stock is produced from one tree.
- Our MDF substrates are formaldehyde free and do not off-gas.
- The solid hardwoods used in the interior cabinetry and all of our drawer bodies are made of FSC (Forest Stewardship Council) certified wood.
- Our chair frames are made of FSC certified, solid Beech.
- Over 70% of our veneers are native to North America, thereby lowering the carbon footprint to receive them at our Massachusetts workshop.

Antoine Proulx
"is furniture meant
to be handed down to
future generations."

The New York Times



- We use only water-based stains and polycarbonate finishes which are low V. O. C. No petroleum products are used in our manufacturing facility.
- The water-based glue we use is Quality Certified by GREENGUARD for low indoor air pollution.
- The baked-on epoxy finish on all our steel and aluminum components is low V. O. C and there is no water pollution caused while making it or applying it.
- All of our steel and/or aluminum components are recyclable and contain recycled material.
- We collect all of our sawdust and compact it into bricks. We then use these bricks to supplement the heating systems of our workers' homes. This also reduces what goes into landfill.
- Antoine Proulx furniture is built to last. It is durable, hand made furniture which is classic in design.

Richard Desplaines, Master Cabinet Maker
Partner, R & P Woodworking, Inc.



Patricia Desplaines, Head of Operations
Partner, R & P Woodworking, Inc.



OVER THE YEARS, ANTOINE PROULX HAS SERVED MANY FAMOUS AND PRESTIGIOUS INDIVIDUALS AND INSTITUTIONS. HERE ARE JUST A FEW:

Entertainment and Sports

Oscar de la Hoya, boxer
Carmen Electra, model and entertainer
Christina Ferrari, TV Personality, actress
Kelsey Grammer, actor & producer
Ron Howard, director, actor
Billie Jean King, tennis legend
Nathan Lane, actor
Lenny Kravitz, musician
Dave Navarro, musician
Suze Orman, TV personality, financial analyst
Mike Piazza, legendary baseball catcher
Jean Reno, actor

Hotels

Hotel Intercontinental
Four Seasons Hotels and Resorts
Mauna Kea Beach Hotel
MGM Mirage
Navarino Resorts, Greece
Ritz Carlton Hotels and Resorts
Sheraton Hotels and Resorts
Starwood Hotels and Resorts Worldwide, W Hotels
Wynn Las Vegas

Interior Design Firms

Albert Hadley, *Interior Design* Hall of Fame, White House decorator for the Kennedys
D'Aquino Monaco, *Interior Design* Hall of Fame
Drake Designs, Jamie Drake, *Interior Design* Hall of Fame
Geoffrey Bradfield, Inc.
Gensler
Gomez Associates, Mariette Himes Gomez, *Interior Design* Hall of Fame
Kenneth Brown Design, Host of HGTV's *reDesign*
Michael S. Smith, Inc., White House decorator for the Obamas
Olson Sundberg Kundig Allen Architects
Rockwell Group, *Interior Design* Hall of Fame
Steven Harris Architects, LLP, *Interior Design* Hall of Fame
Vern Yip, Host of HGTV's *Next Design Star*

Television and Movie Credits

How Do You Know (Columbia Pictures)
Autumn in New York (MGM Pictures)
The Astronaut's Wife (New Line Cinema)
While You Were Out (TLC)
Queer Eye for the Straight Guy (Bravo)

Commercial/Institutional

Bloomingdale's, New York
Golden Gate National Parks, San Francisco
Gump's, San Francisco
Harvard University
Hearst Publications, Pamela Fiori
Louis Vuitton, USA
Macy's
Microsoft

GALERIE ANTOINE PROULX

4175 North Goldwater Blvd., #105 • Scottsdale, AZ 85251
T 602-952-1580 marc@antoineproulx.com

BUSINESS/MAILING ADDRESS

3320 North 44th Street • Phoenix, AZ 85018
T 602-952-1580 marc@antoineproulx.com